



VKLAL VISHNU PHASE I

A Veekaylal Investment Project

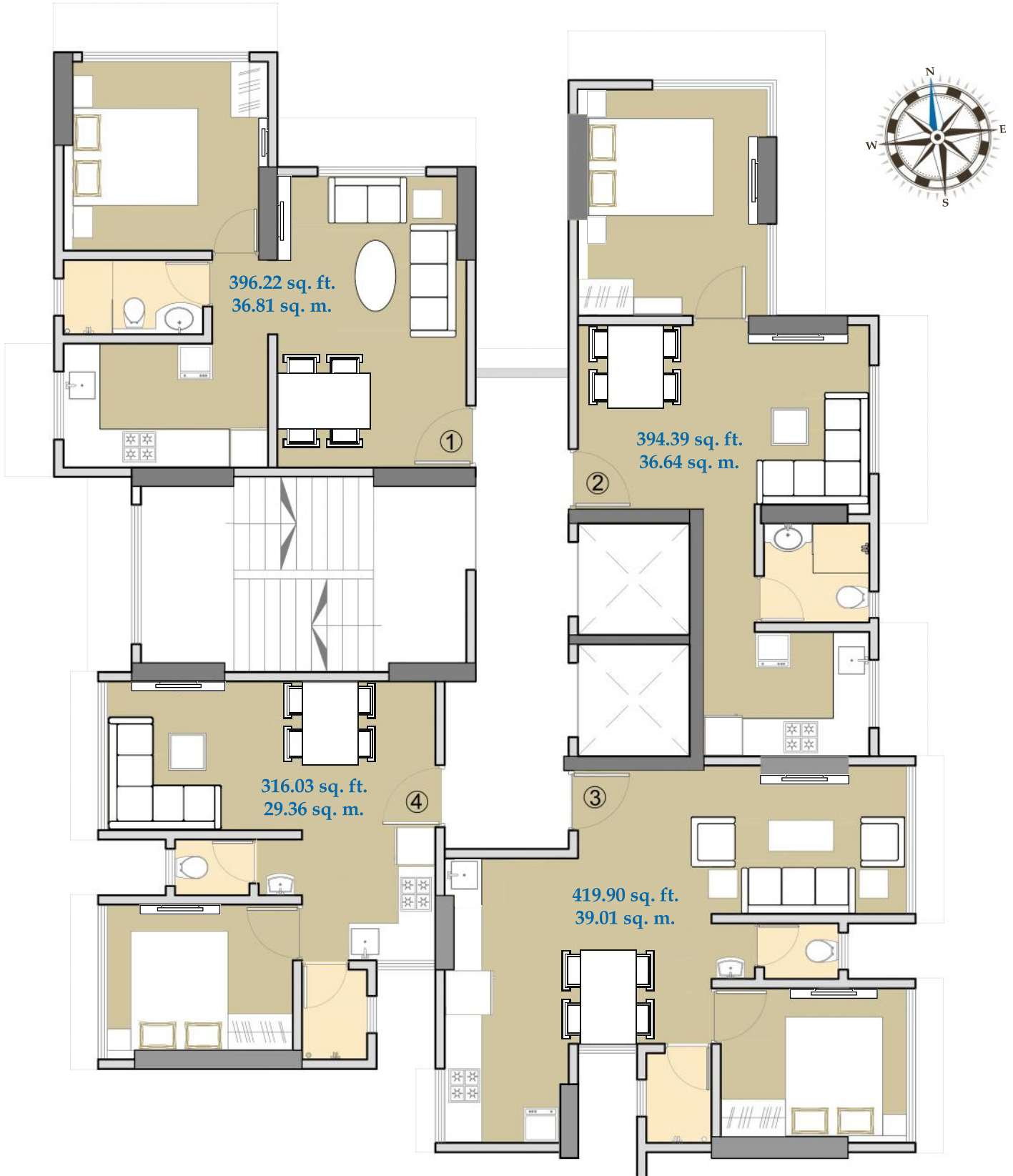
SN Dubey Road, Rawalpada,
Dahisar East, Mumbai - 400 068



Email: sales@vklalco.com | Website: www.vklalco.com | Sales Office: +91 86574 43652 / 53
Nikhil: 75067 12268 | Rohan: 75067 12265 | Amjad: 75067 12267
MahaRERA Registration No. P51800011626 available at website: maharera.mahaonline.gov.in

TOWER A FLOOR PLAN

VKLAL VISHNU PHASE I is a first-class residential project, centrally located in the heart of Dahisar. Our goal is to provide you with Mumbai's best accommodation that offers beautiful homes to its residents. This top-quality 22-storey residential tower has been designed to offer luxurious and spacious apartments. VKLAL VISHNU PHASE I is made with the highest quality construction and complies with all important fire safety measures.



DISCLAIMER: Renderings, floor plans, images and measurements are approximate and are for illustrative purposes only. While we do not doubt the floor plans accuracy, we make no guarantee, warranty or representation as to the accuracy and completeness of the floor plan. You or your advisors should conduct a careful, independent investigation of the property to determine to your satisfaction as to the suitability of the property for your space requirements. Nothing in this brochure constitutes any agreement or offer for sale, rent or transfer of any property.

PROPOSED 3D FLOOR PLAN FOR FLAT 2

These 1-BHK first-class apartments are designed to offer ample space with modern amenities and the ultimate comfort. Each apartment boasts large windows in both the living area and bedroom providing splendid natural light throughout the space.

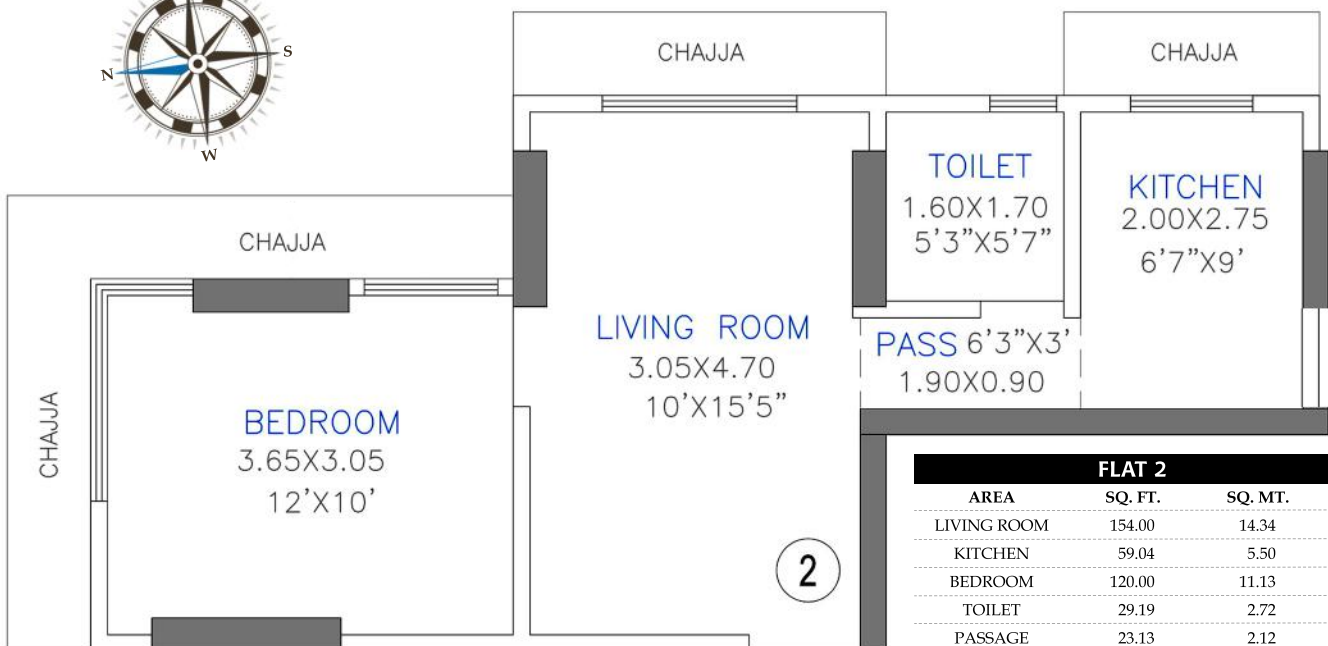
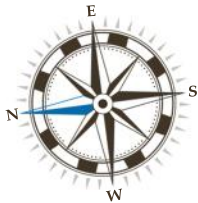
YOUR DREAM HOME
WITH THE PERFECT
LOCATION



FLOOR PLAN DIMENSIONS OF FLAT 2

Each dream apartment also offers breath-taking city views or park views. The living area is large enough to fit a 4-seater dining table and a large sofa for lounging. The kitchen also has a large window, allowing for proper ventilation while cooking.

RERA Carpet Area 394.39 sq. ft.



DISCLAIMER: Renderings, floor plans, images and measurements are approximate and are for illustrative purposes only. While we do not doubt the floor plans accuracy, we make no guarantee, warranty or representation as to the accuracy and completeness of the floor plan. You or your advisors should conduct a careful, independent investigation of the property to determine to your satisfaction as to the suitability of the property for your space requirements. Nothing in this brochure constitutes any agreement or offer for sale, rent or transfer of any property.

SHOW FLAT PICTURES

Veekaylal's goal is to provide you and your family with your dream home. This beautiful residential tower offers high quality construction, amazing park or city views and on-site parking facilities. We can also offer all residents help with furnishing their apartments as we maintain a full-time staff of interior designers that can make your dream home a reality.



LOCATION MAP



AMENITIES

- Security System
- Premium Electrical Wiring
- Fire Alarm
- Lavish Entrance Lobby
- Vitrified Flooring
- Premium Sanitaryware
- Branded Elevator
- High Quality Bath Fittings
- Parking Facilities
- CCTV Surveillance
- Intercom Facility
- Aluminium Sliding Windows
- Granite Countertops in Kitchen
- Furnished Options Available

CALL US FOR MORE INFO

Email: sales@vklalco.com | Website: www.vklalco.com | Sales Office: +91 86574 43652 / 53
Nikhil: 75067 12268 | Rohan: 75067 12265 | Amjad: 75067 12267
MahaRERA Registration No. P51800011626 available at website: maharera.mahaonline.gov.in